



Preformed  
thermoplastic  
road marking

- **Horizontal traffic signs**
- **Easily applied all year round by a person, with a broom and a gas burner**
- **Lasts 6-8 times longer than paint**





## Preformed thermoplastic road marking

- **Continuously produced since 1980**
- **International test certificates**





# Anti-Skid

Preformed  
thermoplastic  
with high skid  
resistance

- For marking areas such as cycle lanes, stairs and manhole covers where skid resistant surfaces are needed
- Skid resistance after application: > 65 SRT
- High density of transparent and tumbled glass grains







## Type II

Type II  
preformed  
thermoplastic

- **Preformed Type II markings perfect for motorways and highways**
- **Wet night retro-reflectivity due to drainage effect of the profiled structure**
- **Glass beads embedded in the material**

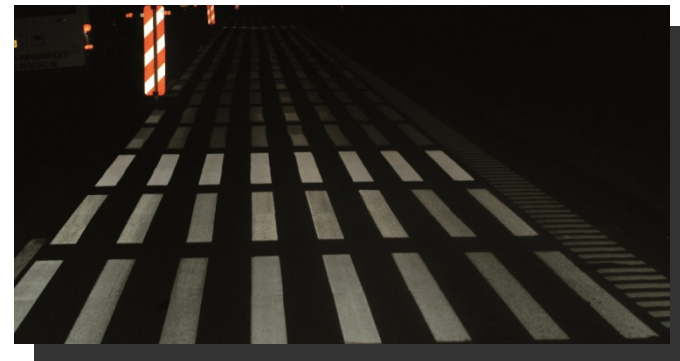
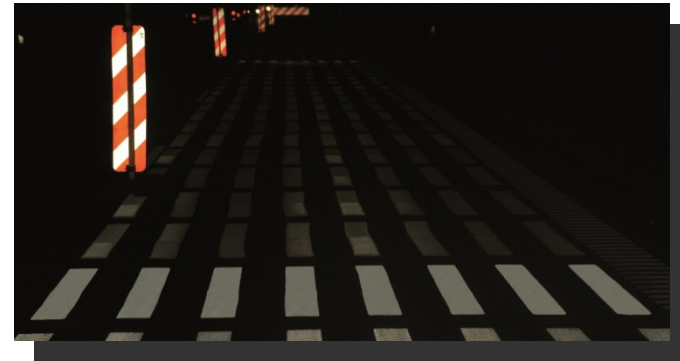




# Vizibility

Type II  
preformed  
thermoplastic

- Retro reflection on motorways and highways
- Performs in wheel track, skip line and centre line
- Retro reflection all through life time of the markings

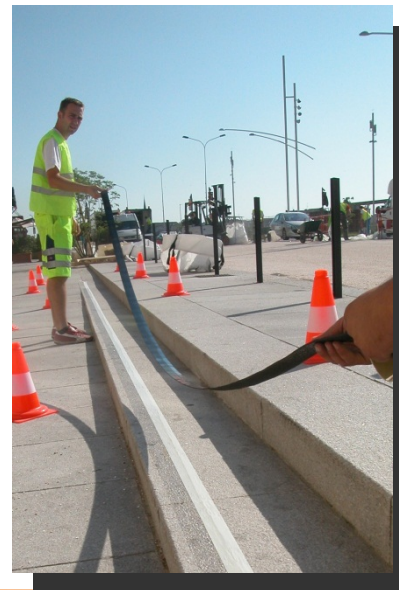
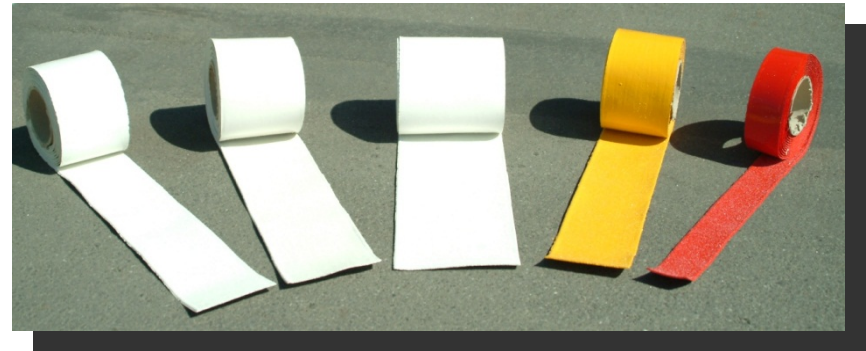




# Rolls

Rolls in  
preformed  
thermoplastic

- Rolled 5 meter lines
- Parking places
- Repairing longer lines
- Special lining
- Curving lines





# ViziGrip

Skid resistance  
and visibility

- **Special preformed thermoplastic for high skid resistance and visibility**
- **The right surface material spread in special pattern gives the high performance**







## 3D-X

Preformed  
thermoplastic  
and grinding

- Multicoloured road marking – visible in one direction only
- Raised with 3D feature
- Snow plow resistant
- Combined with sinus shaped grooves in wheel track for rumble effect





# RibLine®

Profiled  
preformed  
thermoplastic

- Retro reflection and rumble effect
- For application of short distances of high retro reflection markings
- Fast application with burner and adhesive





Cold plastic for  
high traffic  
requirements

- Meet the demanding requirements for highly durable marking systems
- Application possible under different seasonal weather conditions





Cold plastic for  
high traffic  
requirements

- **High durability**
- **Suitable for all application works by hand**
- **Suitable with all types of application techniques**







# Rollplastic

Colourful area  
markings

- Solvent free cold plastic
- Colourful area markings with grip
- Also for trafficked areas and bicycle lanes
- Durability





# RollGrip

Cold plastic  
with grip

- Solvent free cold plastic
- Quartz-fillers sized up to 2 mm inside
- Tough and rough markings with high grip and durability
- For areas with high wear and tear like breaking zones in front of pedestrian crossings





# Adhesive

Cold plastic  
glue

- To be combined with coloured coarse Bauxit
- Color the PlastiRoute® Adhesive, and the colortone of the Bauxit is increased
- The "Rolls-Royce" of grip

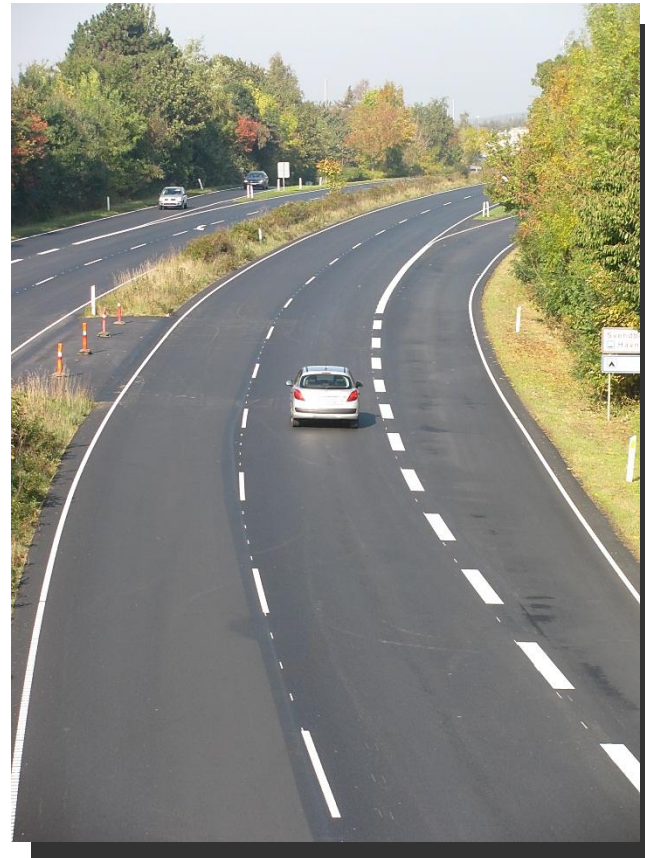




# **ViaTherm®**

**Thermoplastic  
road marking  
material**

- **For non reflective,  
Type I and Type II  
markings**
- **International test  
certificates**
- **Not harmful for the  
environment**



# ***ViaTherm***<sup>®</sup>

**Thermoplastic  
road marking  
material**

- **Retroreflection and durability**
- **For every road marking need**
- **Glass beads embedded in the material**



# ViziSpot®

Thermoplastic  
Type II road  
marking system

- Combines ViaTherm® thermoplastic, Ucme® drop-on material and equipment in line with high performance values
- Day and night visibility
- Durability
- International test certificates





# ViziSpot®

Thermoplastic  
Type II road  
marking system

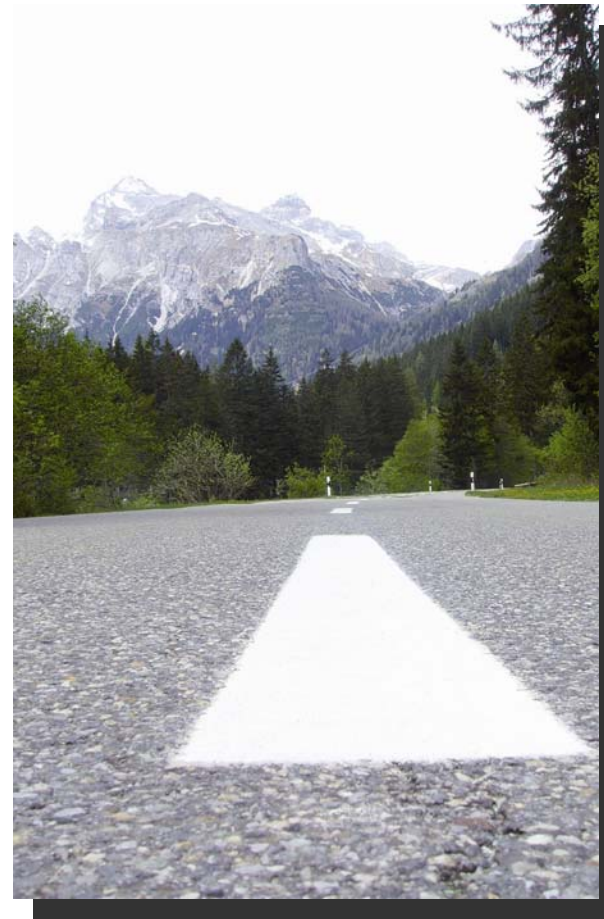


**GEVEKO**  
Marking the future



Water borne  
paint –  
environmentally  
road marking

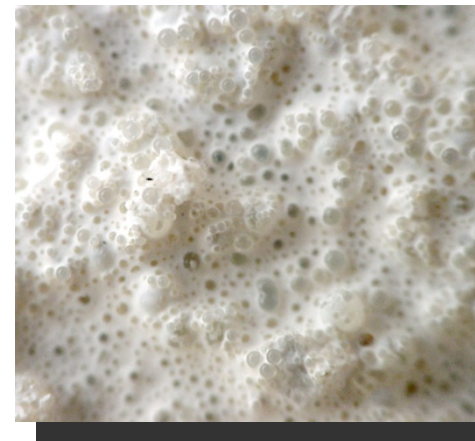
- **For Type I and Type II systems**
- **Minimal security requirements, since not dangerous goods**
- **Easy to handle and easy to apply**





Water borne  
paint –  
environmentally  
road marking

- **Special product available with short pass-over time and early rain-fastness (Patent N°0654068)**
- **Mark more m<sup>2</sup> with AquaRoute®**







## Multi

Water borne  
paint with wider  
application  
window

- **Wider application window with TDS**
- **Early rain resistance – 20 min at 20° C**
- **Temperature window 5-35° C**
- **Good blackening resistance**





# Tempi

Temporary  
water borne  
road marking  
paint

- For events like city runs, marathons or exhibitions
- Life time is 1-5 weeks
- Avoid long lasting confusing markings, when need is temporary



3 days after application



30 days after application



**Solvent borne  
paint – quality  
on all levels!**

- **Marking systems which are approved for a wide range of applications**
- **HSRoute® High-Solid paints are suitable for pneumatic and airless application**







Solvent borne  
paint – quality  
on all levels!

- **HSRoute® AntiSkid** paints are used to provide highly non-skid surfaces
- **HSRoute® Pox**, 2-component paint, can be used if the ground is heavily stressed





**Creative and  
decorative  
markings**

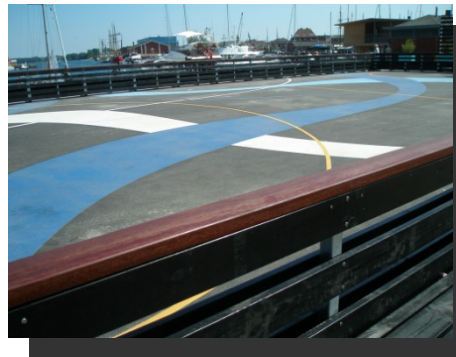
- **Living playgrounds with active learning**
- **Flexible and durable markings with special designs**
- **You name it – we make it!**





**Creative and  
decorative  
markings**

- **Inspiring surfaces in public areas**
- **Colourful markings for displaying company brands and promoting your message**
- **Make the horizontal surface beautiful**







# Bend & Shape

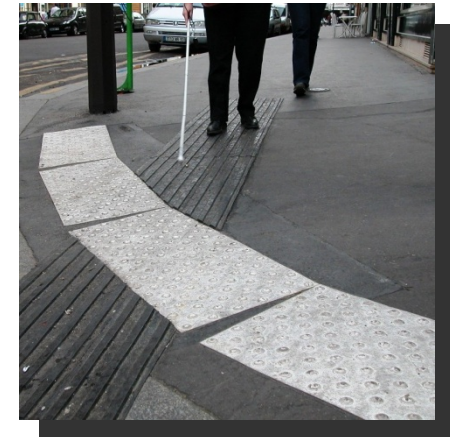
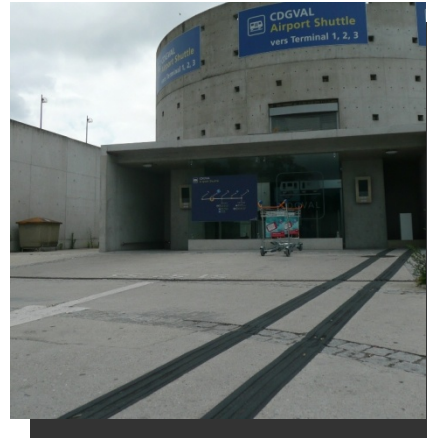
Bend & Shape  
curves and  
circles

- **Bend & Shape your own curves and lines**
- **Form the line on the spot**
- **UV resistant colours**



**Tactile  
markings  
helping the  
blind and  
partially sighted**

- **Perceptible warnings and guidance for the visually impaired**
- **Application on existing surfaces**
- **Skid resistant surface**
- **Flexible thermoplastic material**
- **Signifies a safer route**

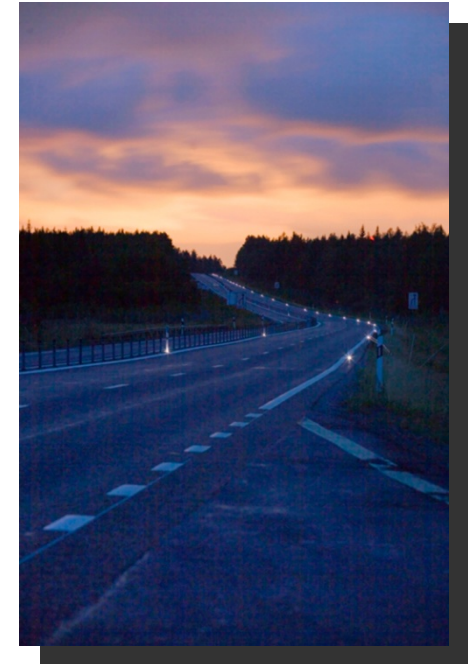
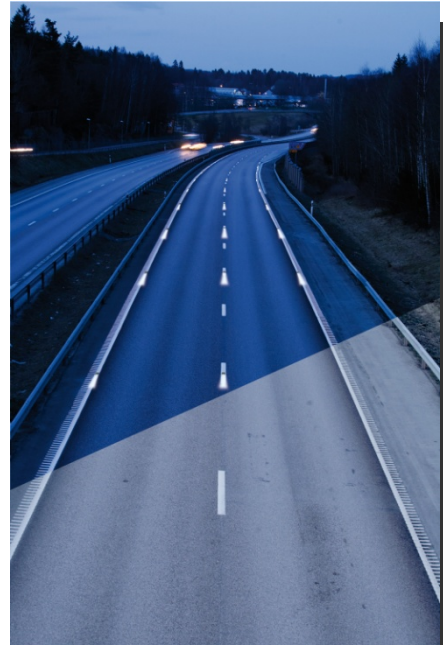


# Geveko ITS

*-intelligence for the Road*

Intelligent road  
marking  
[www.gevekoits.dk](http://www.gevekoits.dk)

- **Plug-and-play**
- **No external energy supply**
- **Lifetime of minimum two years**
- **Products can be combined in systems**
- **Only exchange of modules on site – no repair**





# Geveko ITS

*-intelligence for the Road*

Intelligent road  
marking  
[www.gevekoits.dk](http://www.gevekoits.dk)

## Applications

- **Simple Ghost Driver, Ghost Driver**
- **Pedestrian Crossing, Right Turn, Animal Warning**
- **Simple Traffic Counting, Traffic Counting**

## Products

- **LED-Mark, LED-Guide, I-Module**



Drop-on  
material for all  
markings

- **UCme® is drop-on material of glass beads, antiskid aggregates and mixture of the two**
- **UCme® give initial high retro reflection and the needed skid resistance of the markings**
- **UCme® is available in different versions to fulfil the purpose of the markings**

